

Towards Sustainable Development of Agro-pastoral Systems in Kordofan Region of Sudan

By

Abdalla M. Abdalla

University of Kordofan, Sudan
E-mail: khalil2004@hotmail.com

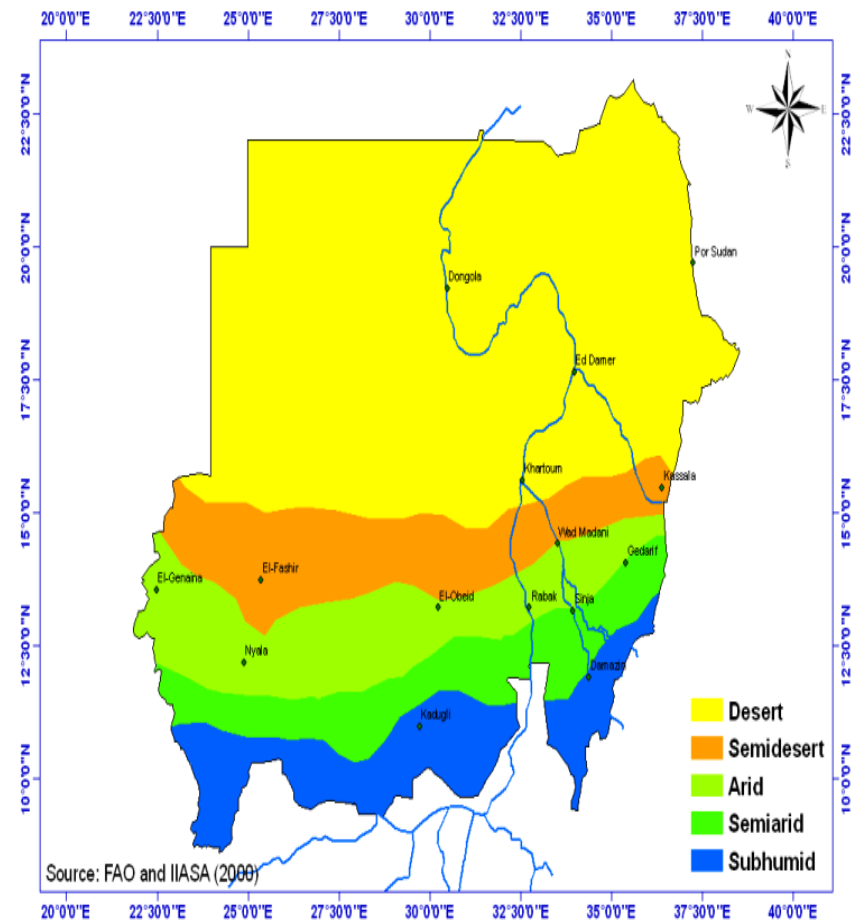
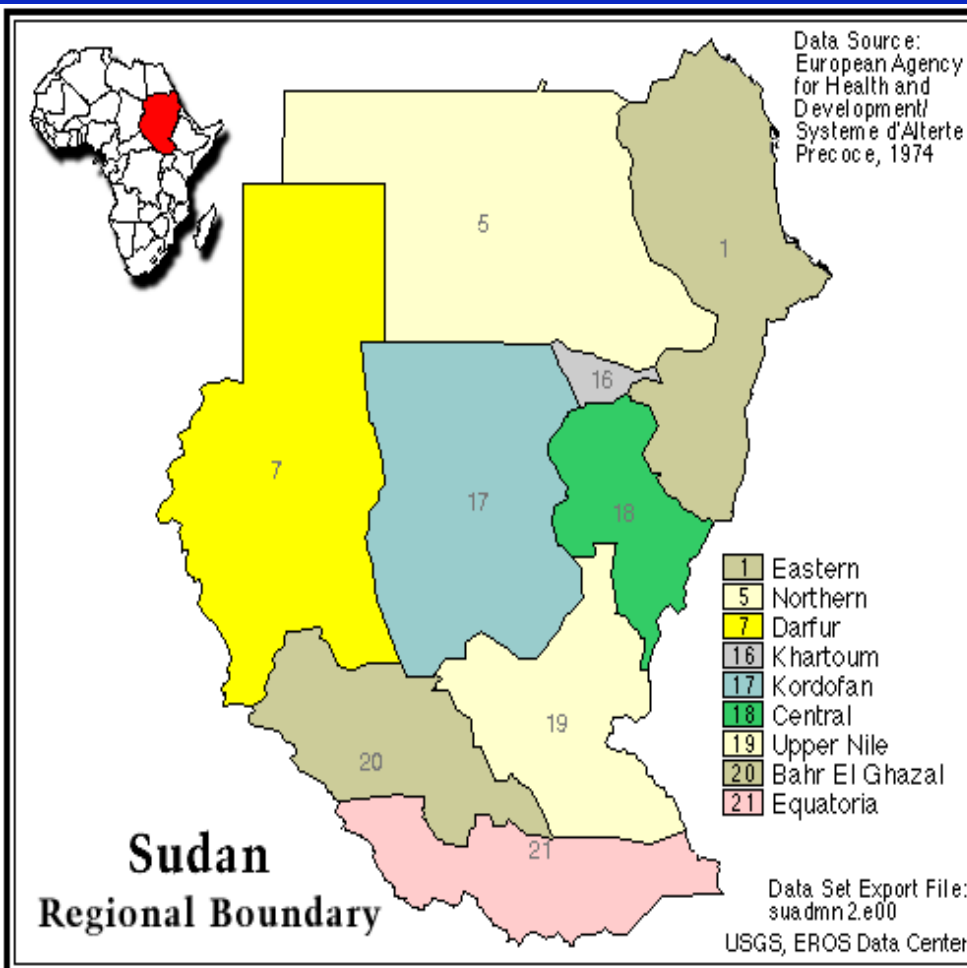
Context of the presentation are to:

- Give an overview on Agro-pastoral Systems(**APS**) in Kordofan.
- Highlight Challenges facing Pastoralists
- Accentuate the interdisciplinary of **APS**
- Illustrate the socio-economic and ecological factors influencing **APS**
- Identify attributes of sustainability in **APS**

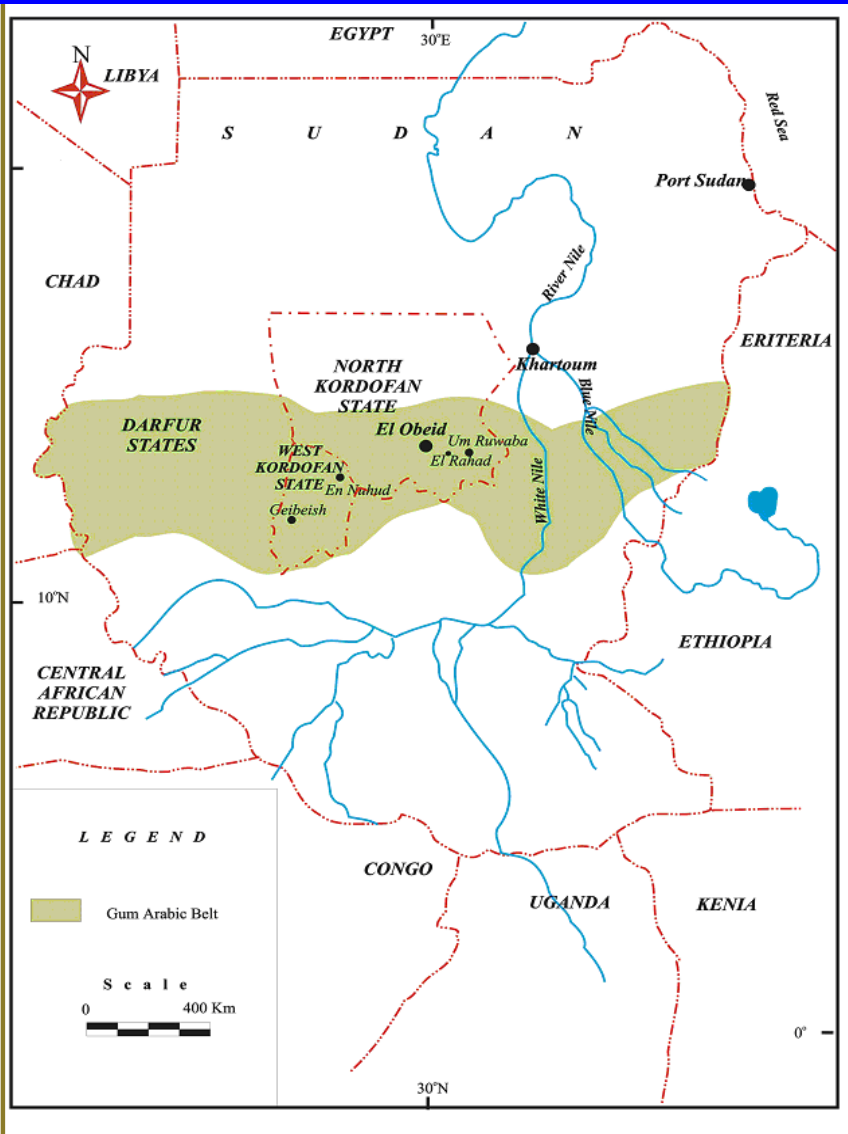
Introduction

- Why Kordofan Region?
- Why Agro-pastoral systems?
- Why Natural Resources management?
- Why conflict over resources
- Why sustainable development?

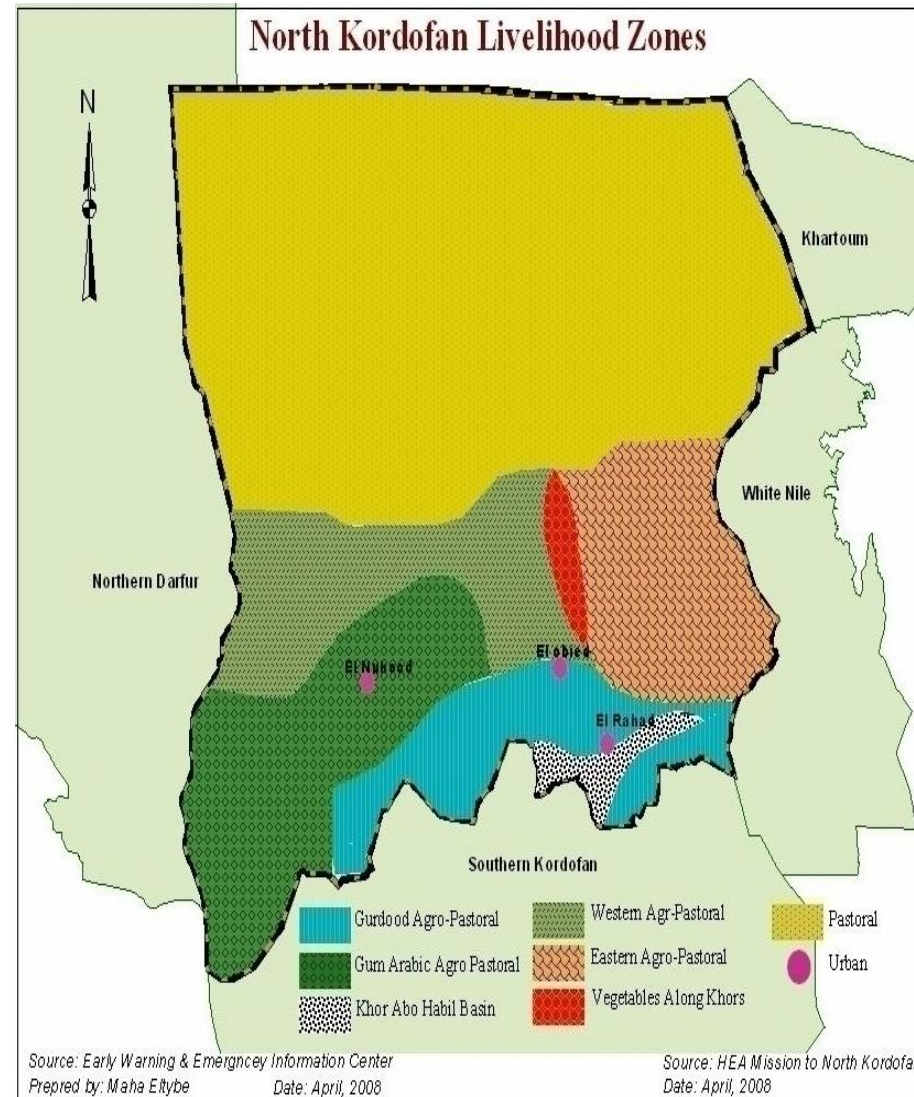
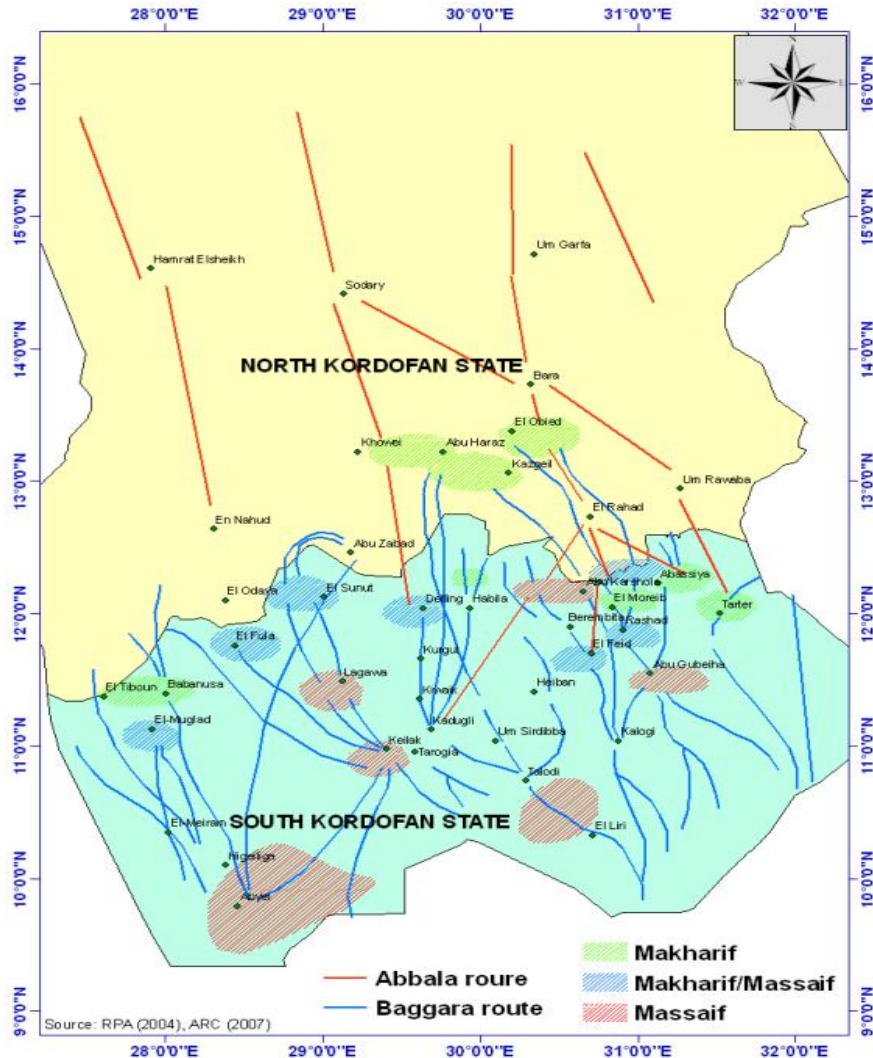
Regions of the Sudan and its Ecological Zones



Gum Arabic



Livestock Routes and livelihood zones in Kordofan

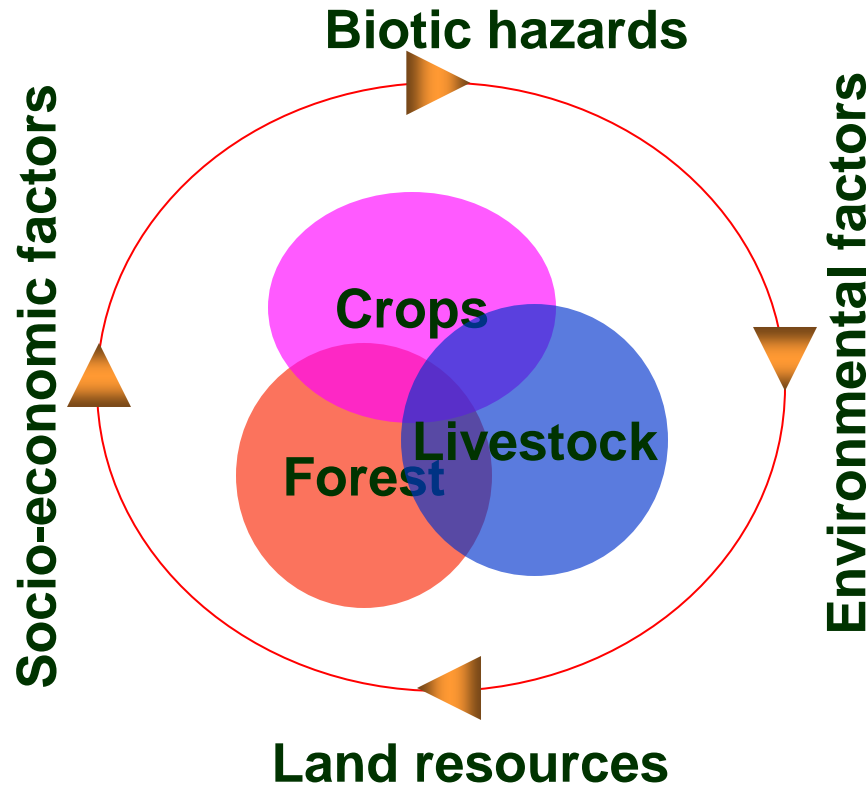


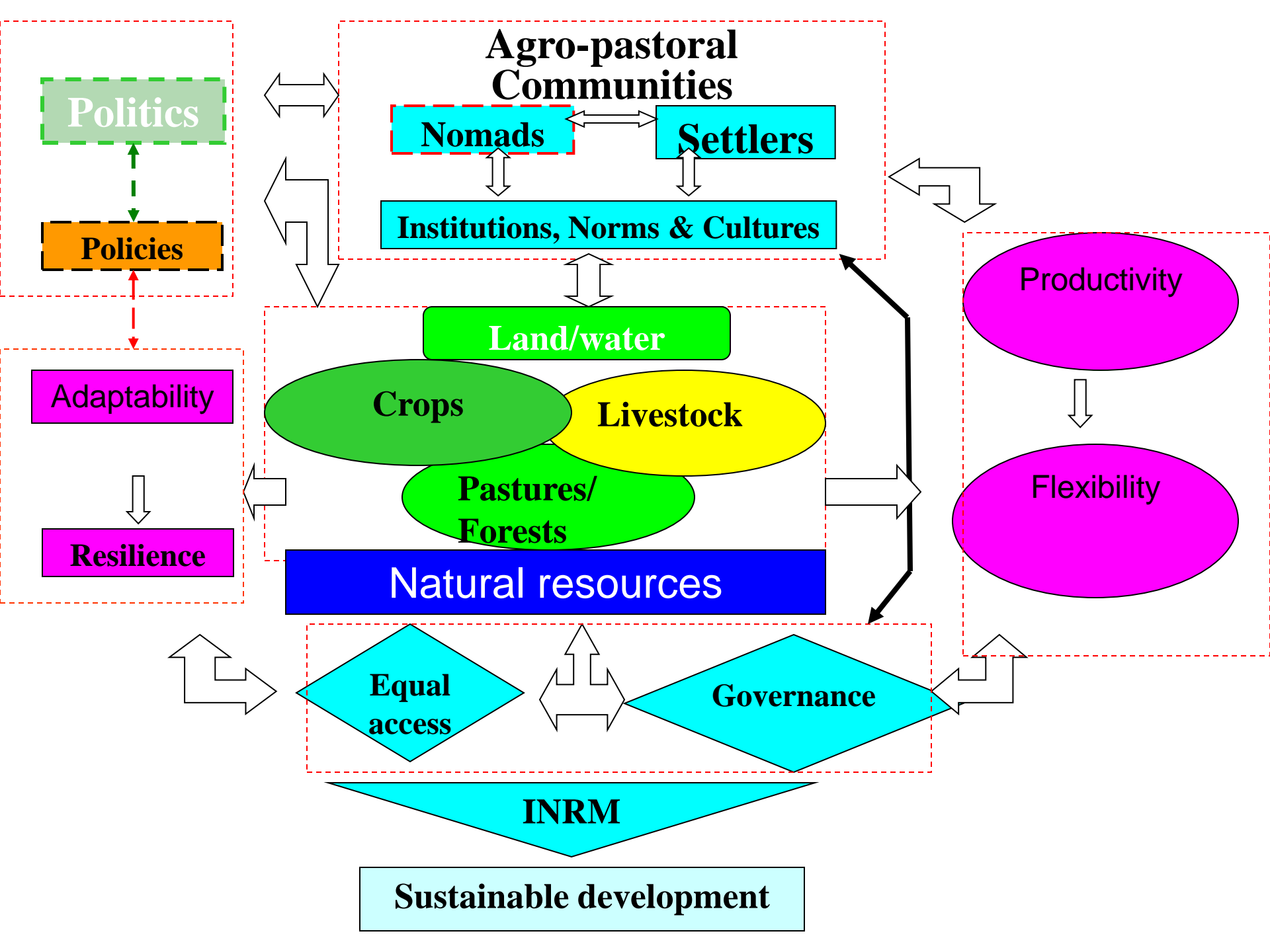


Desert Sheep in Kordofan



Political ecology and its interaction with Agro-pastoral Systems





Attributes of Sustainability

Reliability, resilience , Stability

Adaptability

constancy

flexibility

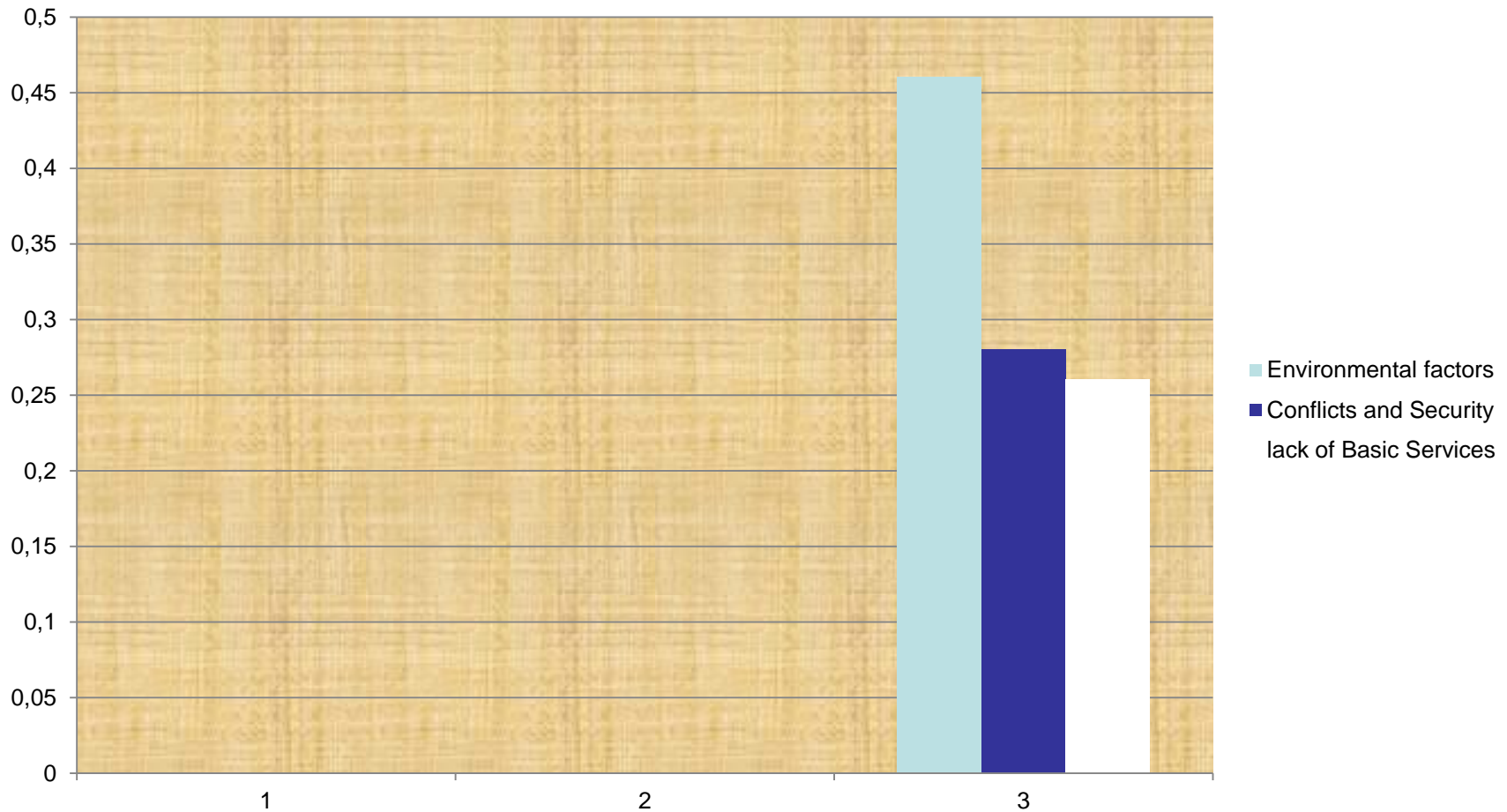
Productivity

Sustainability

Mitigation strategies in Kordofan

- **herd mobility**
- **keeping drought resistant animals**
- **diversifying livestock species**
- **herd splitting**
- **Selling their animals to reduces the amount**

challenges Facing Agro-pastoral system Communities in Kordofan



The Way-out

- 1- Provision of a multidisciplinary approach
- 2- Provision of a prescribe decision making framework
- 3- Prioritizing research/extension and development projects

Do not play out of the tone



Integrated
Management
of Agro-
pastoral
System

The paper concluded that:

- Sustainability of **APS** is not a single discipline appro.
- Implementation of different NRM tools is a bonus
- A decision-making support system be established
- INRM is a socio-economically and ecologically sound option to sustain development in **APS**
- The Conceptual approach should be discoured by different **APS** stakeholders

• شكرا

• *MERCI BEAUCOUP*

• *THANK YOU*

SWOT Analysis

Strengths

VS Weaknesses

- Vast areas of natural rangelands
 - Appreciable number of livestock
 - Gum Arabic belt
 - Acacias & other trees
 - Indigenous knowledge
 - Low cost of production
 - Organic production
- Fragile ecosystems
 - Low level of awareness
 - Prone to constraints
 - Traditional production
 - Lack of institutional coordination
 - **Inherent tribal conflicts over resources**

SWOT Analysis

Opportunities

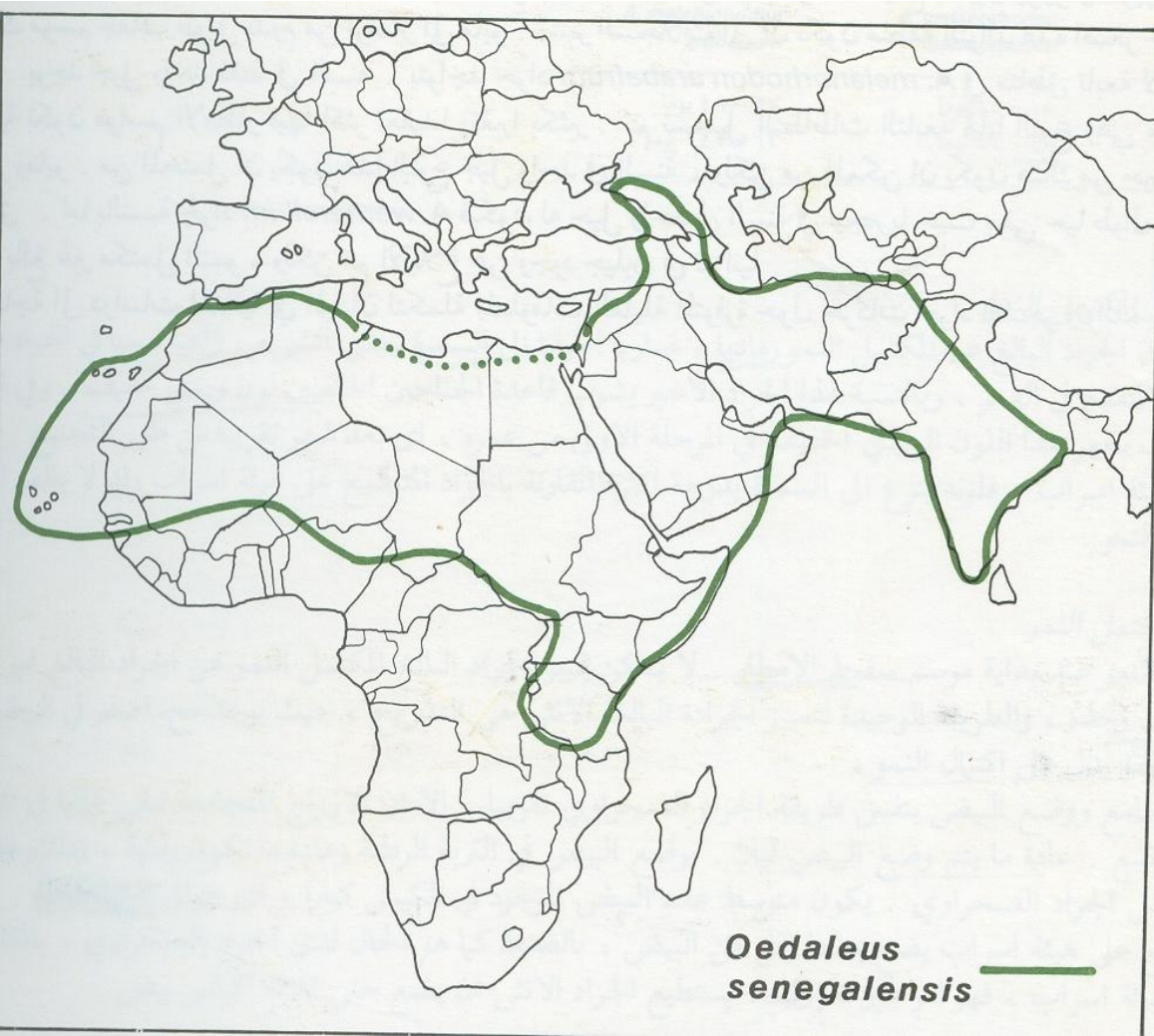
VS

Threats

- Potentiality for investment
- Academic and research Institutes
- Many governmental & NGOs entities tackling NRM
- Political will

- Environ. hazards
- Pressures on nat. resources
- Mono-cropping
- Land tenure system
- Skepticism of adoption
- **Conflicts over resources**
- Artisan gold-mania
- **uncertainties of *Abeiy* issue**
- **Separation of South Sudan**
- Ethno-political polarization.

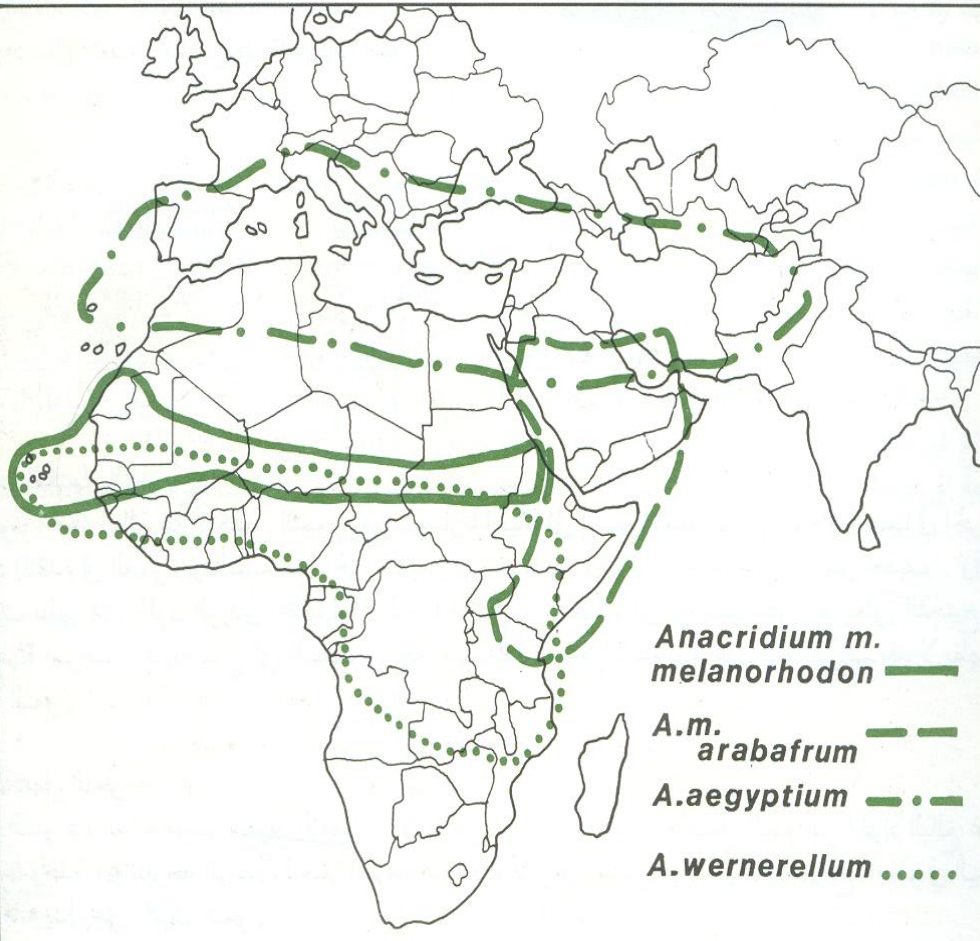
The Senegalese grasshopper



Oedaleus senegalensis ———



The tree locust



ستيدمان، ايه. (المحرر) (1988). دليل الجراد *Locust handbook*. (الطبعة الثانية) لندن : معهد الموارد الطبيعية لإدارة تطوير البلدان عبر البحار، (7) +
180 صفحة



2 3:54 AM